

IWAKI Magnetic drive turbine pumps MDT series



NEW

Compact size but high pressure of 0.35MPa

MDT Series is plastics made magnetic drive turbine pump. Small flow and high head. Small size but high pressure up to 0.35MPa is available.

No leakage seal-less construction makes it most suitable for being incorporated in equipments such as laser and X ray system cooling and temperature control system etc.

Seal-less construction

Thanks to magnet drive seal-less construction, no liquid leaks and no shaft-seal replacement is required.

High pressure/high vacuum

Small size but high pressure up to 0.35MPa is available. It can be used for negative pressure of suction side because it makes suction pressure up to 8.00kPa.

Non-metal construction

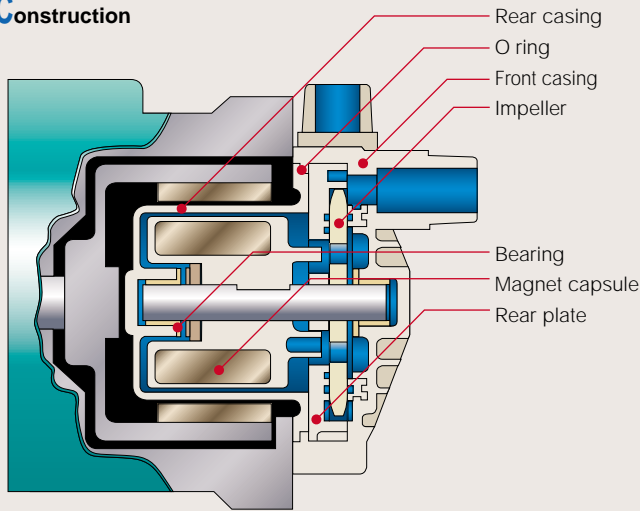
Wet-ends are corrosion resistant materials such as PPS, PEEK, ceramic, carbon. It can handle various chemicals such as acid and alkaline solutions because no metal is used.

Compact design

Ideal for incorporation in equipment and apparatus because it is small size and compact design.



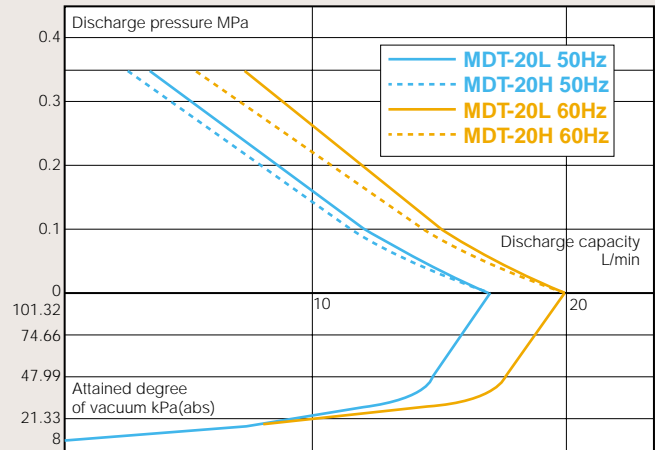
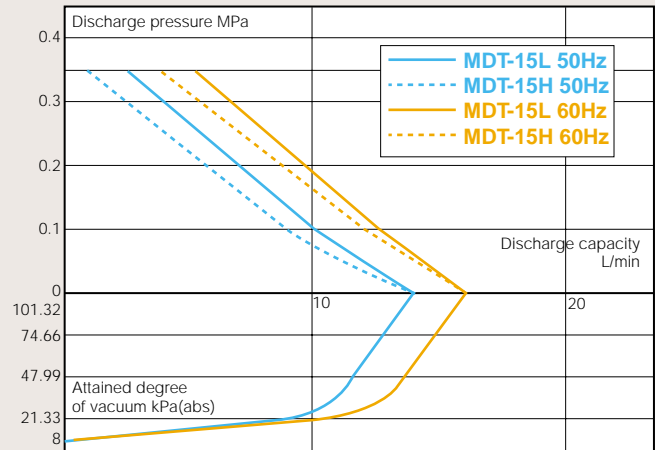
Construction



Wet end materials

Part name	Material
Front casing	GFRPPS, CFRPPS
Thrust	
Rear casing	GFRPPS
Rear plate	GFRPPS
Impeller	CFRPEEK
Magnet capsule	GFRPPS, CFRPPS, Alminaceramic
Spindle	
O ring	EPDM
Bearing	Carbon or siliconized graphite

Performance curves



Specifications

Model	Connection Suction/discharge	Max. capacity L/min	Max. pressure MPa	Attained degree of vacuum kPa(abs)	Liquid temperature range °C	Motor	Mass kg
MDT-15L	R1/2 or 1/2NPT	14/16	0.35	8.00	-20 to 65	AC100V/220V 180/220W Single phase or AC200V 180/220W 3 phase	6.3
MDT-15H				9.33	-20 to 95		
MDT-20L	17/20			8.00	-20 to 65		
MDT-20H					-20 to 95		

Note1: Ask us for liquid below 0 °C temperature. Note2: Max. permissible liquid viscosity is 2mPa.s. Ask us for more viscous liquid. Note3: Slurries containing liquid can not be handled. Note4: Above mentioned performance is pumping clear water at ambient temp. (25° C). Performance may change depending on liquid characteristics and temperature. Ask us for details.

Pump identification

MDT - 15 L C A 100

Liquid temperature range
L: -20 to 65 °C
H: -20 to 95 °C

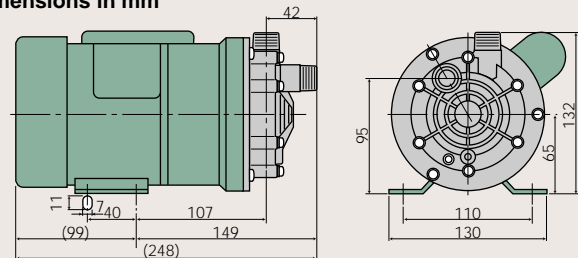
Material of bearing
C: Carbon
D: SiC/Siliconized graphite

Pump size(Max. discharge capacity)
15, 20

Power source
100: AC100V Single phase
200: AC200V 3 phase
220: AC220-240V Single phase

Connection
A: R1/2
B: 1/2NPT

Dimensions in mm



www.iwakipumps.jp

IWAKI CO.,LTD. 6-6 Kanda-Sudacho 2-chome Chiyoda-ku Tokyo 101-8558 Japan TEL : (81)3 3254 2935 FAX : 3 3252 8892

EUROPE / U.S.A.

European office: IWAKI Europe GmbH
Austria : IWAKI (Austria) GmbH
Belgium : IWAKI Belgium N.V.
Denmark : IWAKI Pumper A/S
Finland : IWAKI Suomi Oy
France : IWAKI France S.A.
Germany : IWAKI Europe GmbH
Holland : IWAKI Holland B.V.
Italy : IWAKI Italia S.R.L.
Norway : IWAKI Norge AS
Spain : IWAKI Iberica Pumps, S.A.
Sweden : IWAKI Sverige AB
Switzerland : IWAKI (Schweiz) AG
U.K. : IWAKI Pumps (UK) Ltd.
U.S.A. : IWAKI America Inc.

TEL : (49)2154 9254 0 FAX : 2154 9254 48
TEL : (43)2236 33469 FAX : 2236 33469
TEL : (32)13 67 02 00 FAX : 13 67 20 30
TEL : (45)48 24 2345 FAX : 48 24 2346
TEL : (358)9 2742714 FAX : 9 2742715
TEL : (33)1 69 63 33 70 FAX : 1 64 49 92 73
TEL : (49)2154 9254 50 FAX : 2154 9254 55
TEL : (31)297 241121 FAX : 297 273902
TEL : (39)02 990 3931 FAX : 02 990 42888
TEL : (47)66 81 16 60 FAX : 66 81 16 61
TEL : (34)943 630030 FAX : 943 628799
TEL : (46)8 511 72900 FAX : 8 511 72922
TEL : (41)26 674 93 00 FAX : 26 674 93 02
TEL : (44)1743 231363 FAX : 1743 366507
TEL : (1)508 429 1440 FAX : 508 429 1386

ASIA / OCEANIA

Australia : IWAKI Pumps Australia Pty Ltd. TEL : (61)2 9899 2411 FAX : 2 9899 2421
China
Hong Kong : IWAKI Pumps Co., Ltd. TEL : (852)2607 1168 FAX : 2607 1000
Shanghai : IWAKI Pumps (Shanghai) Co., Ltd. TEL : (86)21 6272 7502 FAX : 21 6272 6929
Beijing : IWAKI Pumps Co., Ltd. (Beijing office) TEL : (86)10 6442 7713 FAX : 10 6442 7712
Guangzhou : GFTZ IWAKI Engineering & Trading Co., Ltd. TEL : (86)20 8435 0603 FAX : 20 8435 9181
Indonesia : IWAKI Singapore (Indonesia Branch) TEL : (62)21 6906606 FAX : 21 6906612
Korea : IWAKI Korea Co.,Ltd. TEL : (82)2 3474 0523 FAX : 2 3474 0221
Malaysia : IWAKI Sdn. Bhd. TEL : (60)3 7803 8807 FAX : 3 7803 4800
Philippines : IWAKI Chemical Pumps Philippines, Inc. TEL : (63)2 888 0245 FAX : 2 843 3096
Singapore : IWAKI Singapore Pte Ltd. TEL : (65)6316 2028 FAX : 6316 3221
Taiwan : (886)2 8227 6900 FAX : 2 8227 6818
Thailand : IWAKI (Thailand) Co.,Ltd. TEL : (66)2 322 2471 FAX : 2 322 2477

Caution for safety use: Before use of pump, read instruction manual carefully to use the product correctly. Actual pumps may differ from the photos. Specifications and dimensions are subject to change without prior notice. For further details please contact us.

2004.6/2000MSN

This catalogue is printed on 100% Recycled Paper. PRINTED WITH SOY INK